

The changing of the building traditions among the Forest Finns

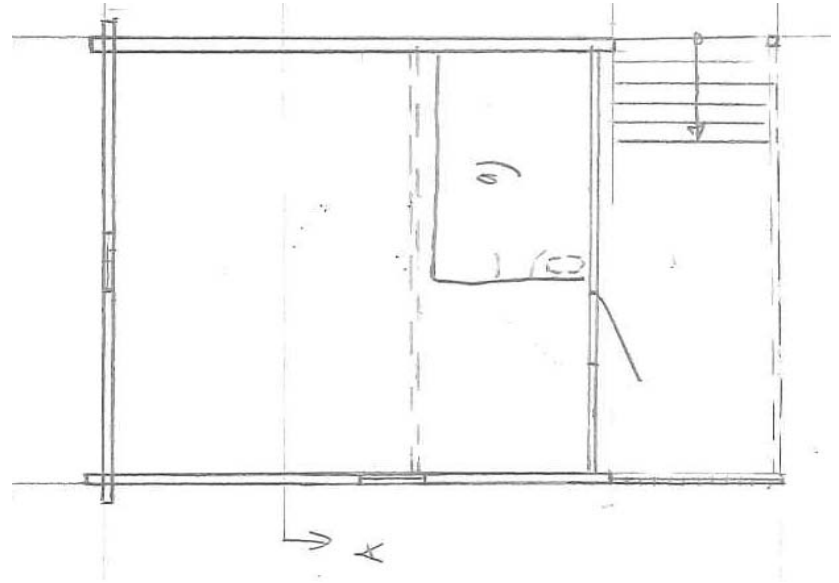
Hans Johnsson



The first building



Single roomed smokehouse



Vika, Östmark, Sweden

Cookinghouse



Cookinghouse at
Samuelsmoen,
Grue Finnskog, Norway

Finnskogen at change

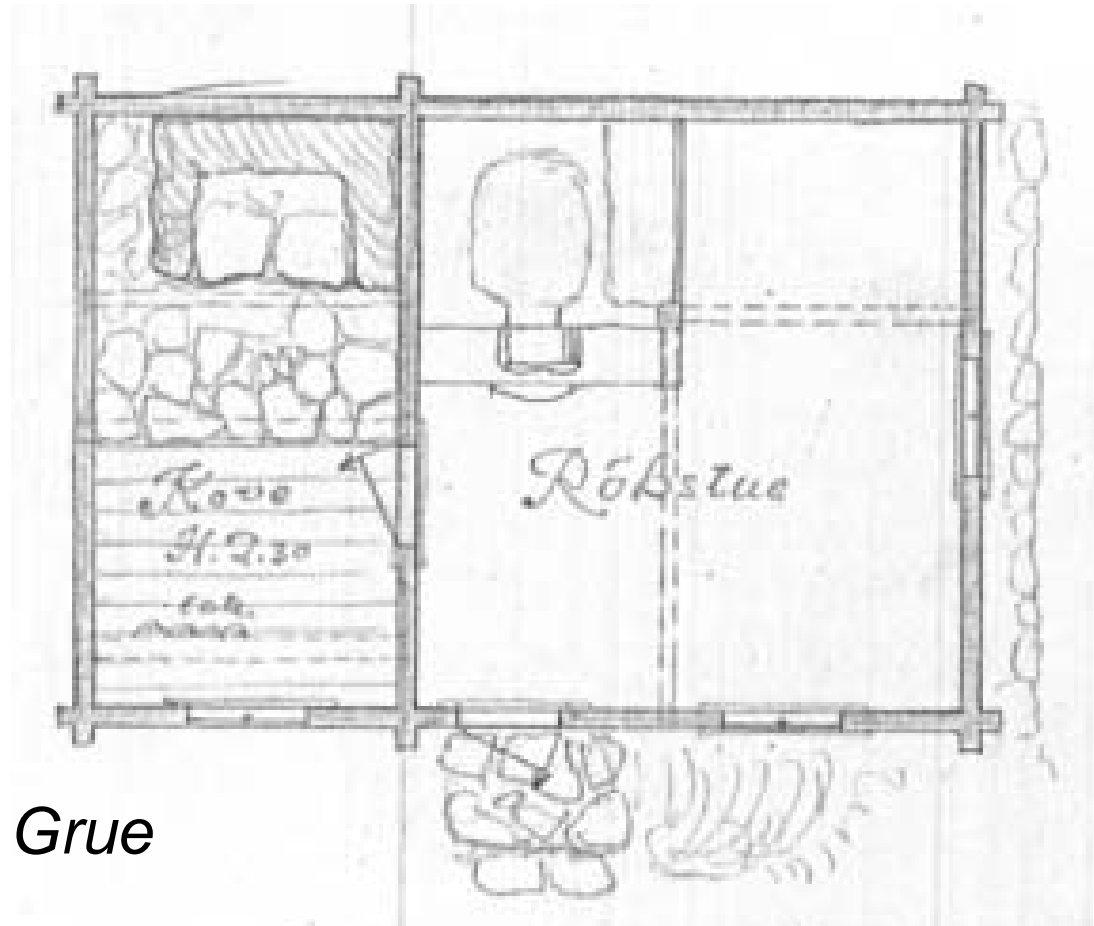


Former savusauna,
Leikåsen, Grue Finnskog,
Norway

The aspect of assimilation

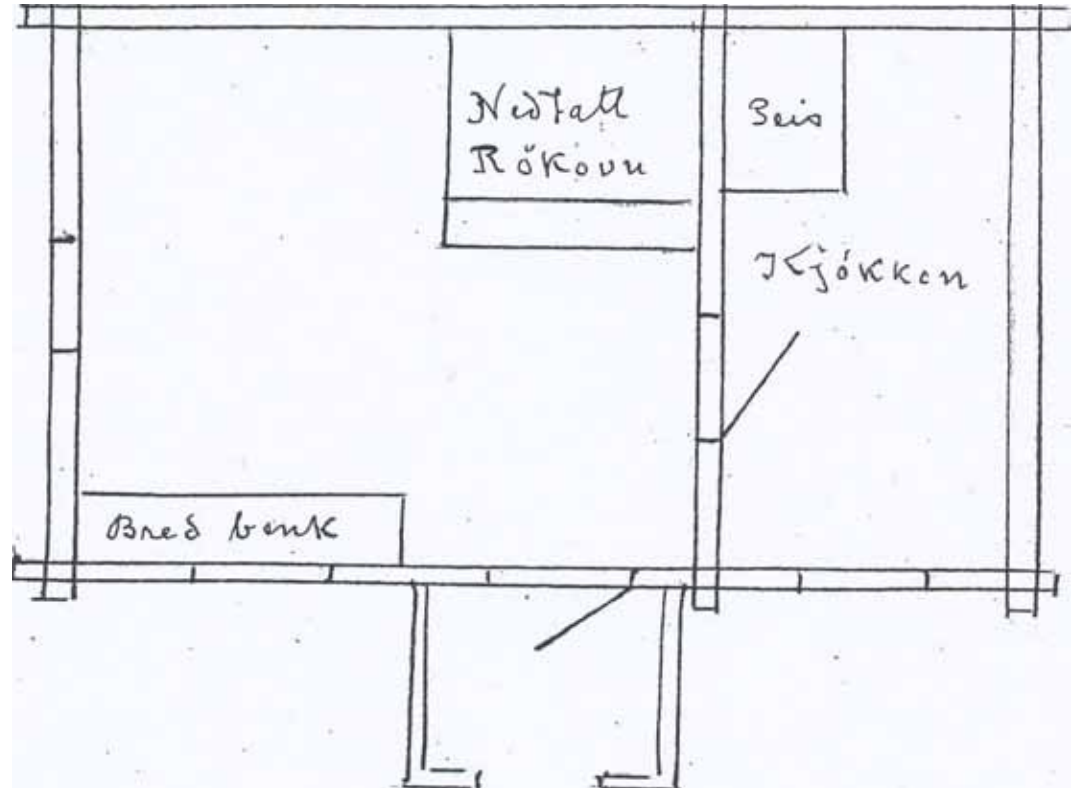
- Starting point; Slash and burn cultivation
- Increasing social gap after 1850
- Alliances throughout marriage

Variations of roomplans



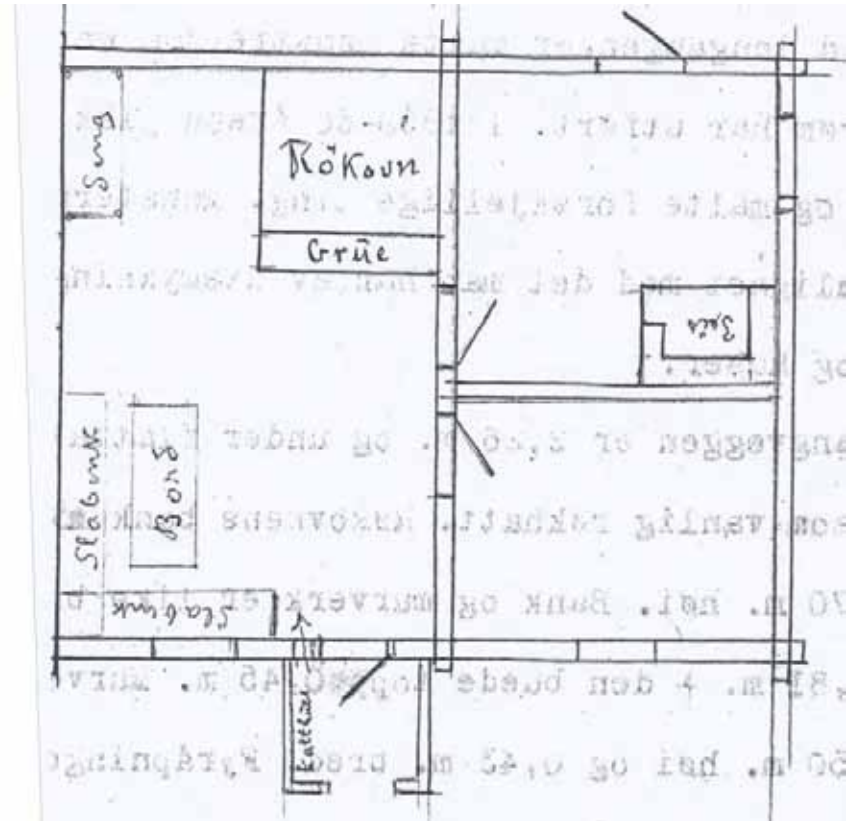
*Mellom Østberget, Grue
Finnskog, Norway.*

Variations of roomplans



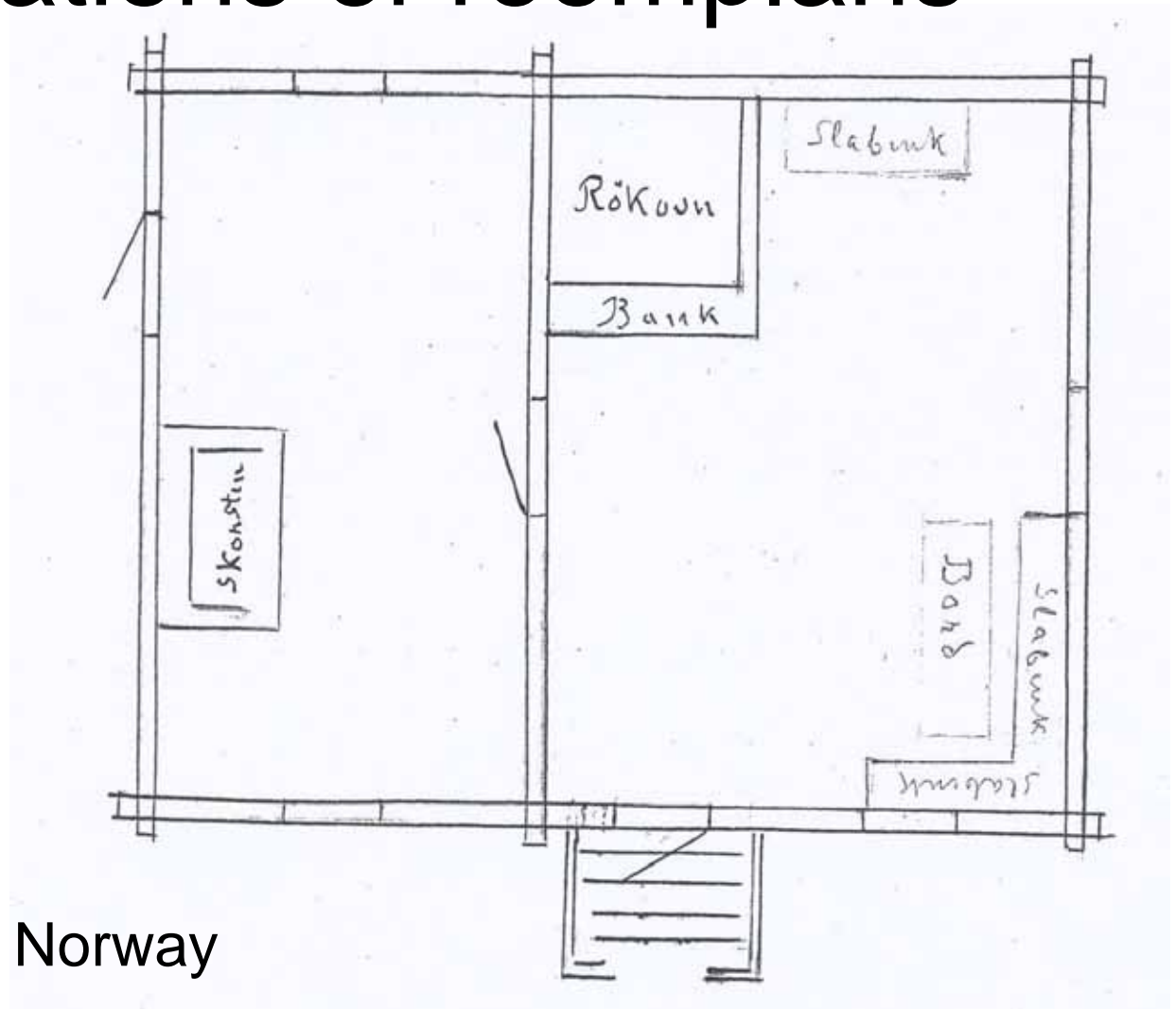
Skredderbråten,
Grue Finnskog, Norway

Variations of roomplans



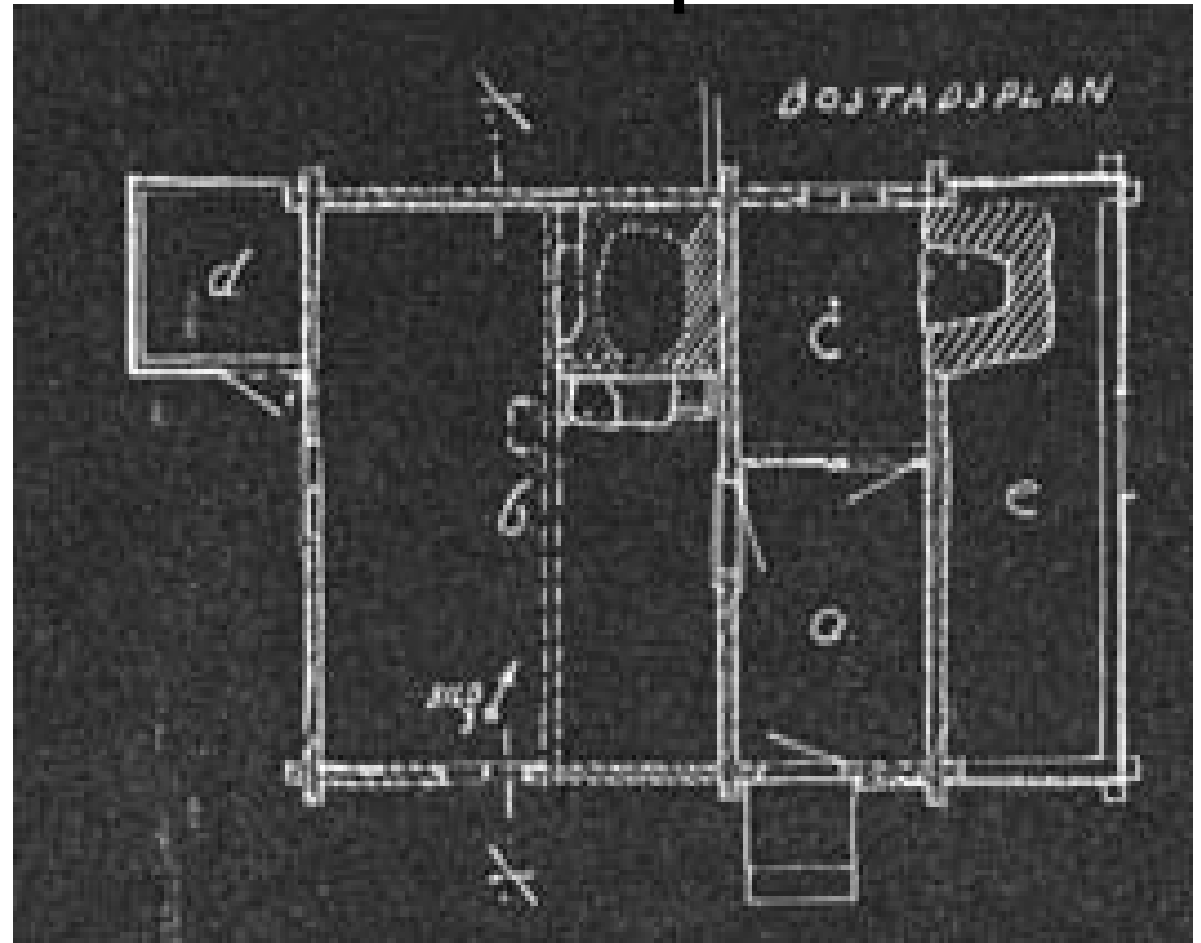
Øvre Askogsberg,
Grue Finnskog, Norway

Variations of roomplans



Kirksjøberget,
Grue Finnskog, Norway

Variations of roomplans



Kvarnola, Östmark, Sweden



Conclusion

- New additions were not customary
- Fireplaces did not have a predefined location
- The smokehouse did not change much over time in spite of other modernization

